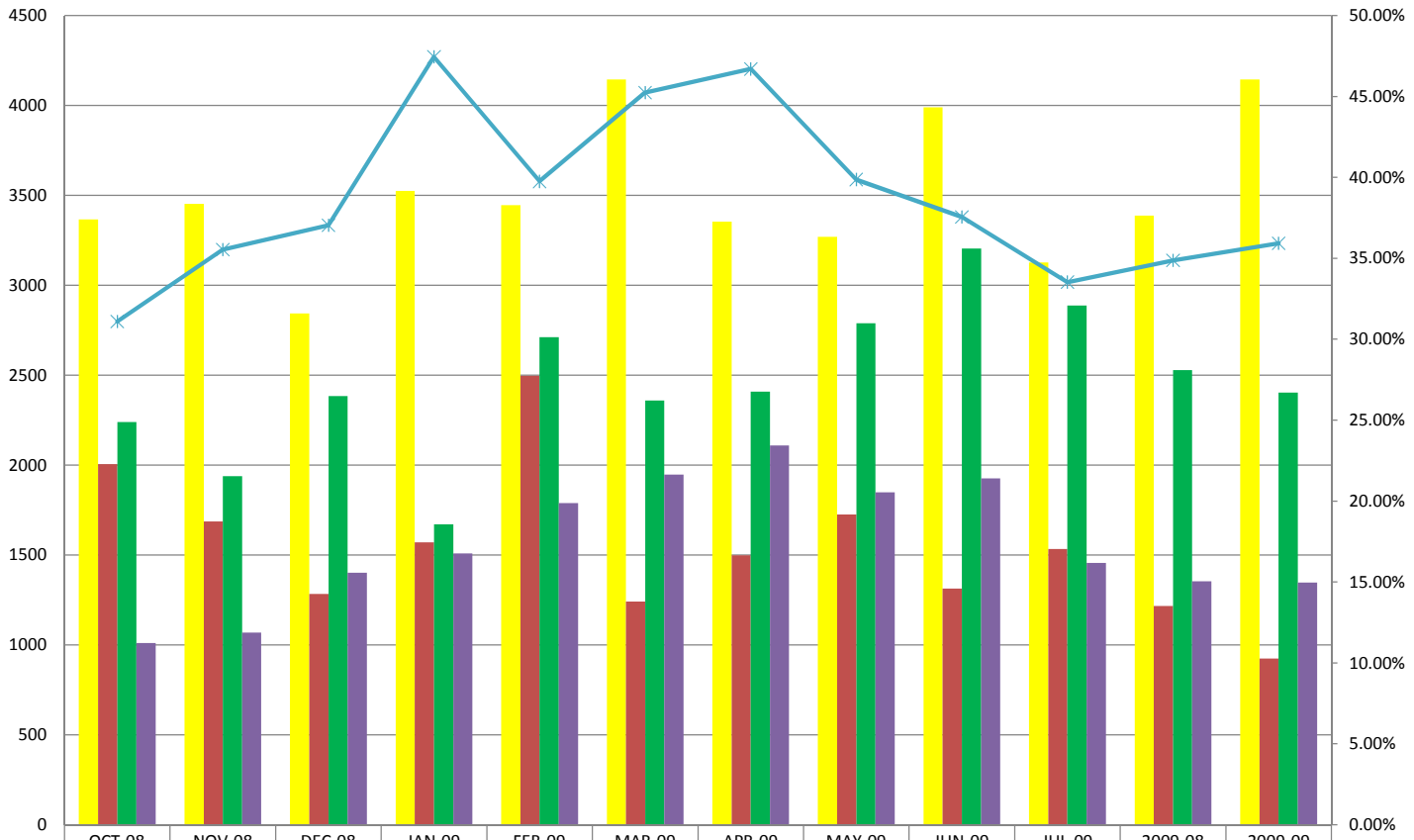


**DATA INTELLIGENCE
CORPORATION**

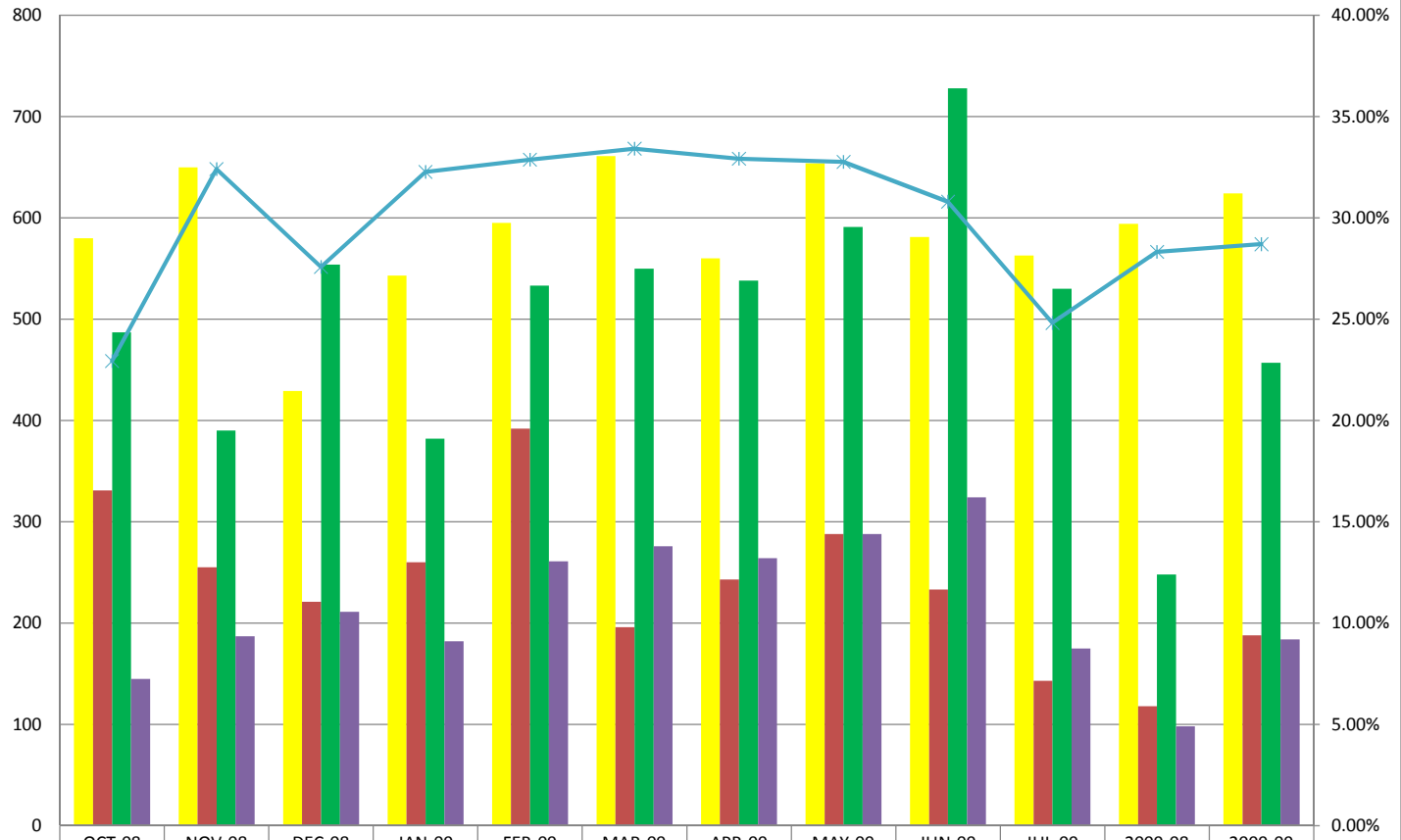
Data Driven Intelligence for Strategic
Real Estate Asset Management

**Big Four Activity
(Volume By Event Type)**



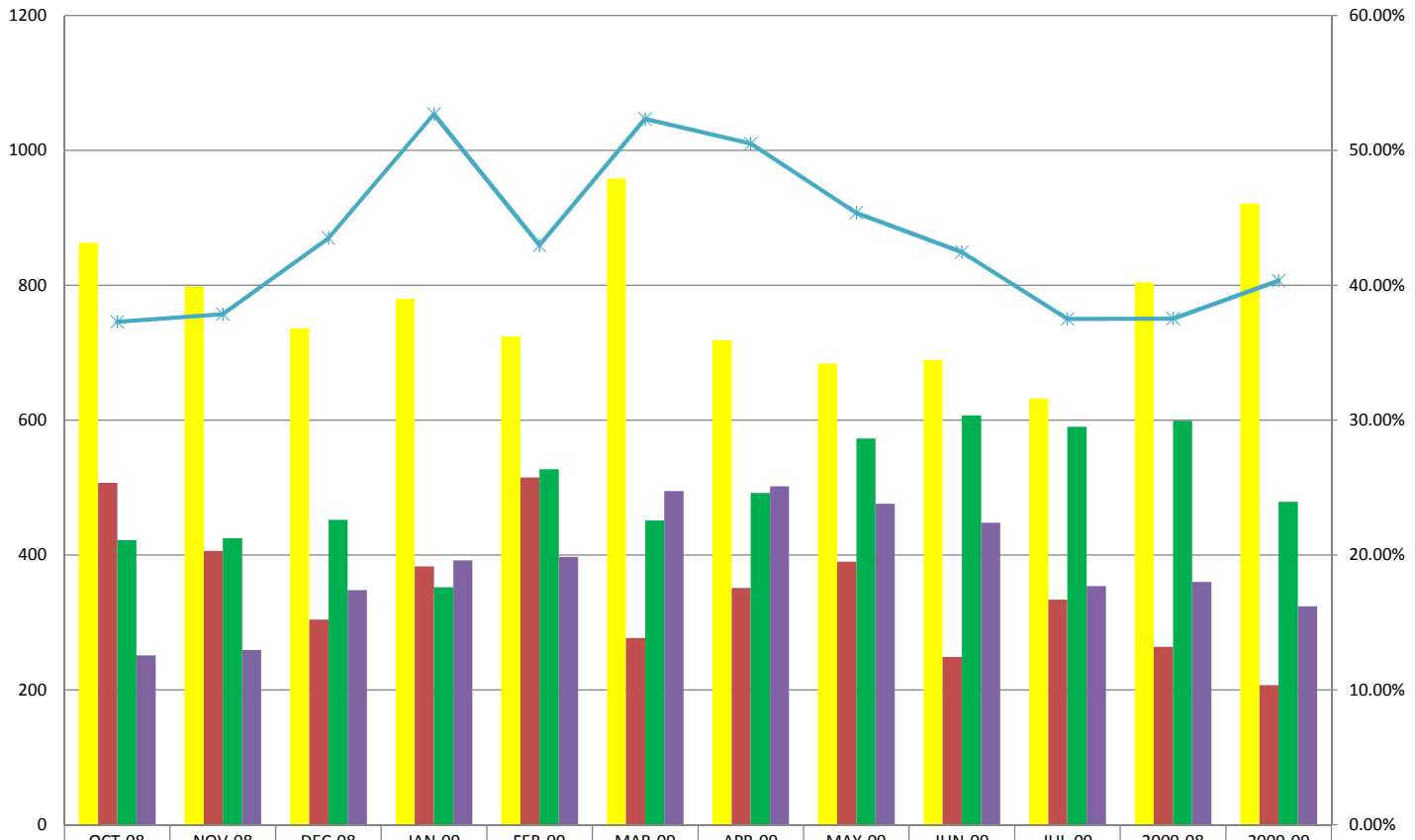
PreForeclosures	3366	3452	2843	3524	3445	4145	3354	3270	3990	3127	3388	4145
Foreclosures	2005	1686	1283	1571	2497	1242	1499	1725	1313	1533	1217	925
MarketSales	2240	1938	2383	1671	2712	2359	2408	2788	3204	2887	2528	2403
REO Sales	1011	1068	1402	1508	1789	1948	2109	1848	1926	1456	1353	1347
REO Sales as % of Total Sales	31.10%	35.53%	37.04%	47.44%	39.75%	45.23%	46.69%	39.86%	37.54%	33.53%	34.86%	35.92%

**Cobb County Activity
(Volume By Event Type)**



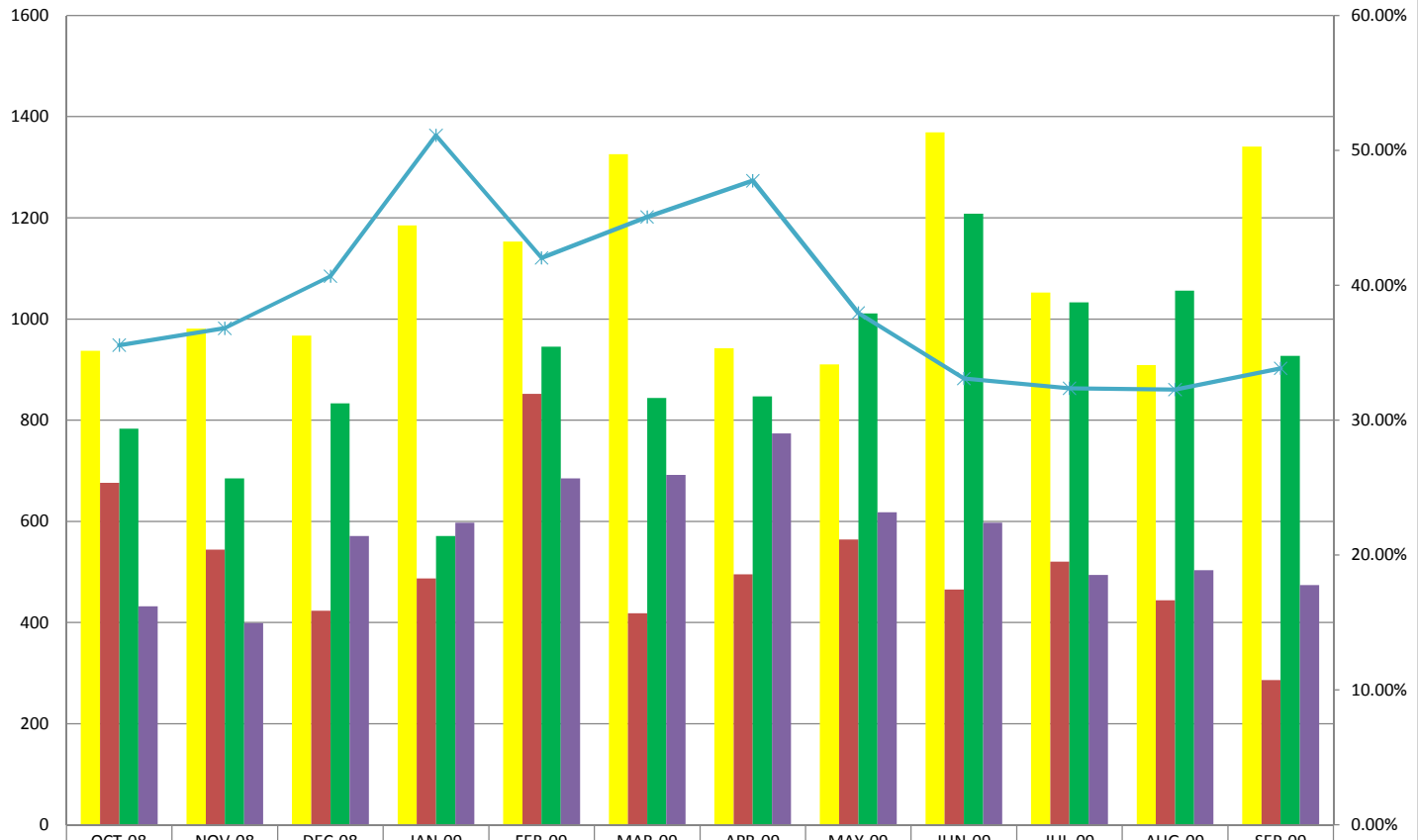
	OCT-08	NOV-08	DEC-08	JAN-09	FEB-09	MAR-09	APR-09	MAY-09	JUN-09	JUL-09	2009-08	2009-09
PreForeclosures	580	650	429	543	595	661	560	654	581	563	594	624
Foreclosures	331	255	221	260	392	196	243	288	233	143	118	188
MarketSales	487	390	554	382	533	550	538	591	728	530	248	457
REO Sales	145	187	211	182	261	276	264	288	324	175	98	184
REO Sales as % of Total Sales	22.94%	32.41%	27.58%	32.27%	32.87%	33.41%	32.92%	32.76%	30.80%	24.82%	28.32%	28.71%

**Dekalb County Activity
(Volume By Event Type)**



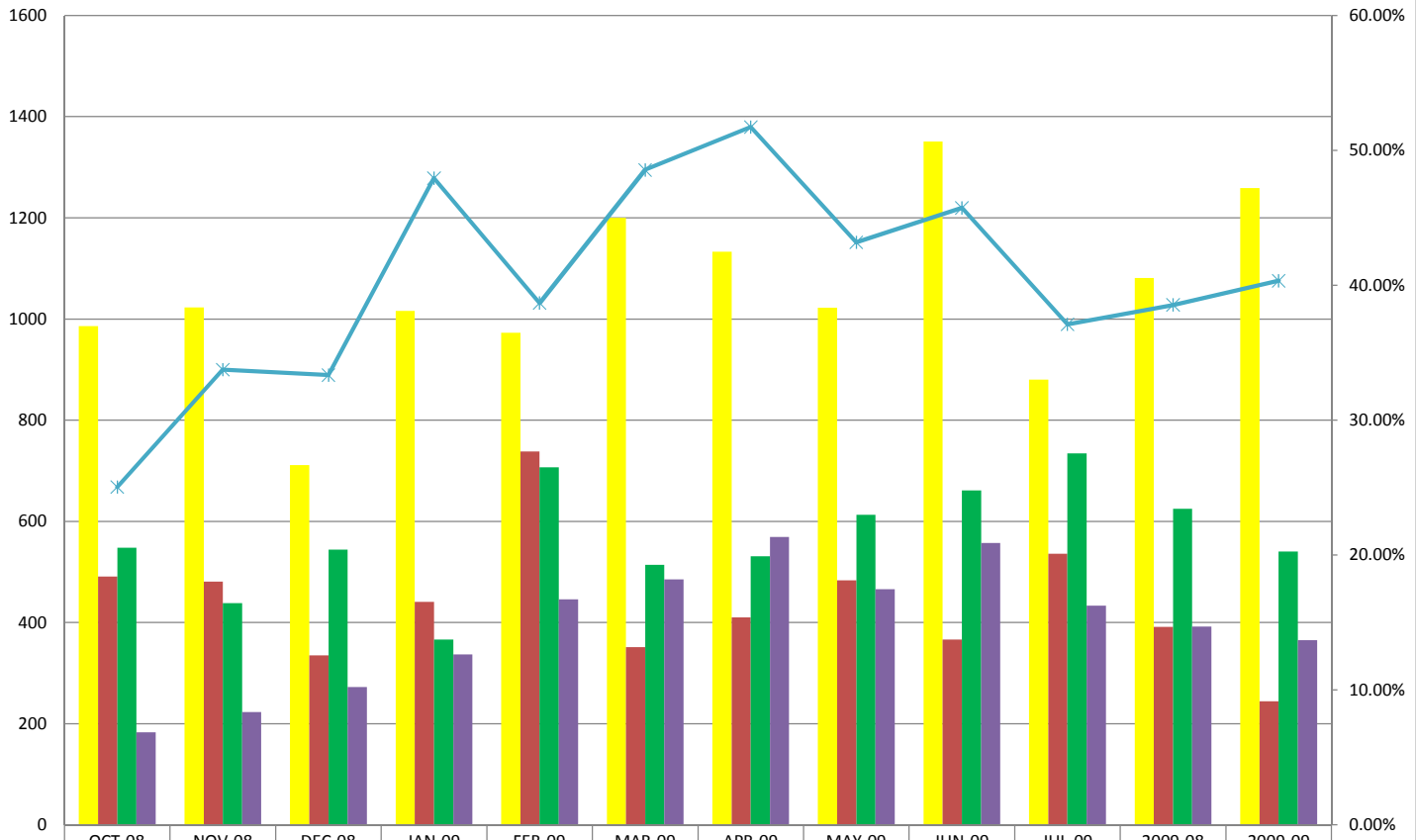
PreForeclosures	863	798	736	780	724	958	719	684	689	632	804	921
Foreclosures	507	406	304	383	515	277	351	390	249	334	264	207
MarketSales	422	425	452	352	527	451	492	573	607	590	599	479
REO Sales	251	259	348	392	397	495	502	476	448	354	360	324
REO Sales as % of Total Sales	37.30%	37.87%	43.50%	52.69%	42.97%	52.33%	50.50%	45.38%	42.46%	37.50%	37.54%	40.35%

**Fulton County Activity
(Volume By Event Type)**



PreForeclosures	937	981	967	1185	1153	1326	942	910	1369	1052	909	1341
Foreclosures	676	544	423	487	852	418	495	564	465	520	444	286
MarketSales	783	685	833	571	945	844	847	1011	1208	1033	1056	927
REO Sales	432	399	571	597	685	692	774	618	597	494	503	474
REO Sales as % of Total Sales	35.56%	36.81%	40.67%	51.11%	42.02%	45.05%	47.75%	37.94%	33.07%	32.35%	32.26%	33.83%

**Gwinnett County Activity
(Volume By Event Type)**



PreForeclosures	986	1023	711	1016	973	1200	1133	1022	1351	880	1081	1259
Foreclosures	491	481	335	441	738	351	410	483	366	536	391	244
MarketSales	548	438	544	366	707	514	531	613	661	734	625	540
REO Sales	183	223	272	337	446	485	569	466	557	433	392	365
REO Sales as % of Total Sales	25.03%	33.74%	33.33%	47.94%	38.68%	48.55%	51.73%	43.19%	45.73%	37.10%	38.54%	40.33%